

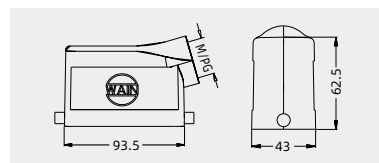
16B Metal hoods/housings - for high voltage inserts(HVE Series)

Degree of protection: IP65

Hoods, side entry



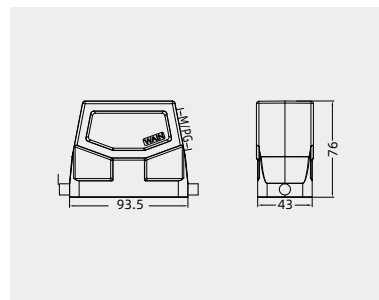
| Thread | Designation | Order No. |
|--------|------------------|------------------|
| M25 | HV16B-SE-2B-M25 | 124 016 515 1003 |
| PG21 | HV16B-SE-2B-PG21 | 124 016 515 1011 |



Hoods, side entry, high construction



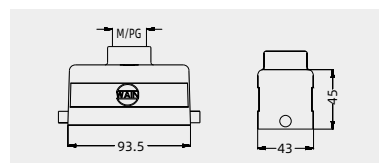
| Thread | Designation | Order No. |
|--------|----------------------|------------------|
| M32 | WV16B-SEH-2B-M32 | 124 116 510 5001 |
| M40 | WV16B-SEH-2B-M40 | 124 116 510 5002 |
| PG21 | WV16B-SEH-2B-PG21 | 124 116 510 5003 |
| PG29 | WV16B-SEH-2B-PG29 | 124 116 510 5004 |
| | with sleeve | |
| M32 | WV16B-SEH-2B-M32 WS | 124 116 515 5004 |
| PG21 | WV16B-SEH-2B-PG21 WS | 124 116 515 5011 |
| PG29 | WV16B-SEH-2B-PG29 WS | 124 116 515 5012 |



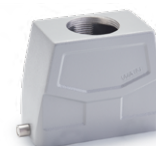
Hoods, top entry



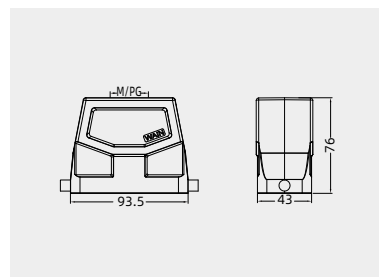
| Thread | Designation | Order No. |
|--------|------------------|------------------|
| M25 | HV16B-TE-2B-M25 | 124 016 415 1003 |
| M32 | HV16B-TE-2B-M32 | 124 016 415 1004 |
| PG21 | HV16B-TE-2B-PG21 | 124 016 415 1011 |



Hoods, top entry, high construction



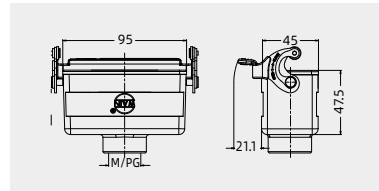
| Thread | Designation | Order No. |
|--------|----------------------|------------------|
| M32 | WV16B-TEH-2B-M32 | 124 116 410 5001 |
| M40 | WV16B-TEH-2B-M40 | 124 116 410 5002 |
| PG21 | WV16B-TEH-2B-PG21 | 124 116 410 5003 |
| PG29 | WV16B-TEH-2B-PG29 | 124 116 410 5004 |
| | with sleeve | |
| M32 | WV16B-TEH-2B-M32 WS | 124 116 415 5004 |
| PG21 | WV16B-TEH-2B-PG21 WS | 124 116 415 5011 |
| PG29 | WV16B-TEH-2B-PG29 WS | 124 116 415 5012 |



Housings, cable to cable



| Thread | Designation | Order No. |
|--------|----------------------|------------------|
| M25 | HV16B-CCT-1L/SC-M25 | 124 016 721 1003 |
| PG21 | HV16B-CCT-1L/SC-PG21 | 124 016 721 1011 |

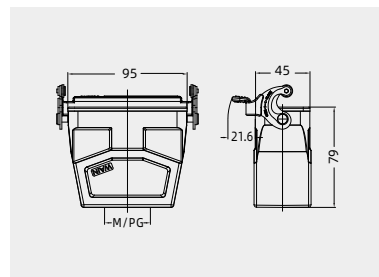


Please refer to page 15-02 for choosing proper model of lock.

Housings, cable to cable, high construction



| Thread | Designation | Order No. |
|--------|--------------------------|------------------|
| M32 | WV16B-CCTH-1L/SC-M32 | 124 116 721 5001 |
| M40 | WV16B-CCTH-1L/SC-M40 | 124 116 721 5002 |
| PG21 | WV16B-CCTH-1L/SC-PG21 | 124 116 721 5003 |
| PG29 | WV16B-CCTH-1L/SC-PG29 | 124 116 721 5004 |
| | with sleeve | |
| M32 | WV16B-CCTH-1L/SC-M32 WS | 124 116 721 5005 |
| PG21 | WV16B-CCTH-1L/SC-PG21 WS | 124 116 721 5011 |
| PG29 | WV16B-CCTH-1L/SC-PG29 WS | 124 116 721 5012 |



Please refer to page 15-02 for choosing proper model of lock.